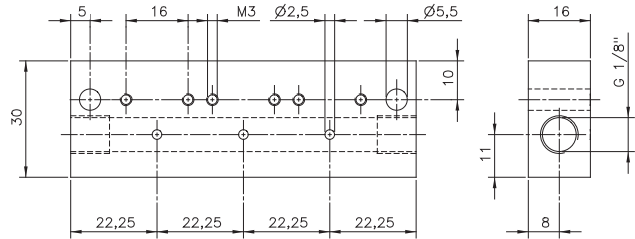
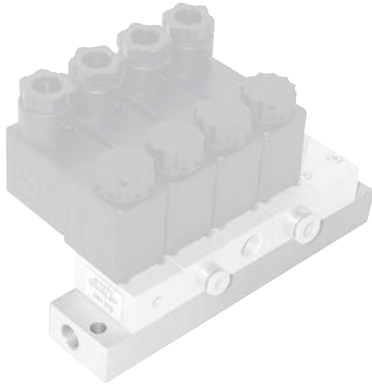


2.6

Manifold Plates

R _ _



Common connection to port 1 (pressure).

The following valves can be assembled to the manifold plate type R _ _:

- MH 312 port 2: M5
- MH 314 port 2: pif 4 mm
- MH 315 port 2: G 1/8"
- MH 316 port 2: pif 6 mm

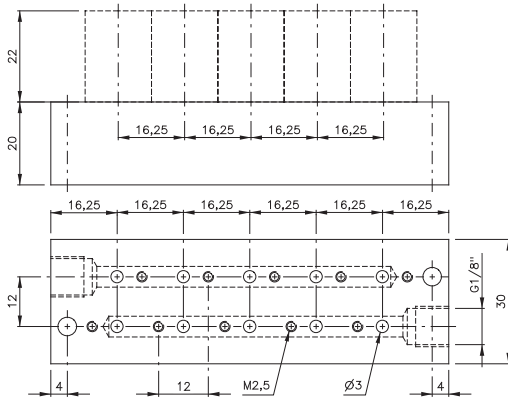
R _ _ Orifice size: 8,5 mm

All the valves are displayed on page 2.5.1.2.2.

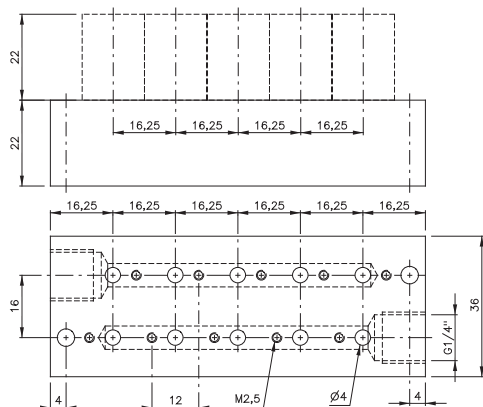
Blanking plates are also available type BP 3.

All the manifold plates offered by Hafner-Pneumatik can be equipped with the DIN-rail mounting clips.

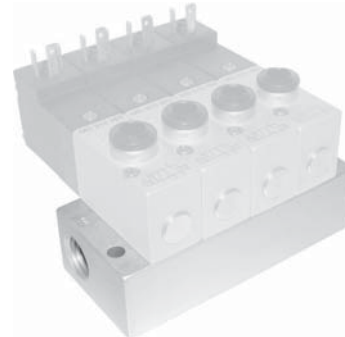
| Stations | Type | Weight | Available |
|----------|------|---------|------------|
| 1 | R 01 | 0,05 kg | from stock |
| 2 | R 02 | 0,08 kg | from stock |
| 3 | R 03 | 0,11 kg | from stock |
| 4 | R 04 | 0,13 kg | from stock |
| 5 | R 05 | 0,16 kg | from stock |
| 6 | R 06 | 0,19 kg | from stock |
| 7 | R 07 | 0,21 kg | from stock |
| 8 | R 08 | 0,24 kg | from stock |
| 9 | R 09 | 0,27 kg | from stock |
| 10 | R 10 | 0,30 kg | from stock |
| 11 | R 11 | 0,32 kg | from stock |
| 12 | R 12 | 0,35 kg | from stock |
| 13 | R 13 | 0,38 kg | from stock |
| 14 | R 14 | 0,41 kg | from stock |
| 15 | R 15 | 0,44 kg | from stock |
| 16 | R 16 | 0,47 kg | from stock |



RD 3__ 303 Orifice size: 5 mm



RD 3__ 403 Orifice size: 6 mm



Common connection to port 1 (pressure) and 3 (exhaust).

The following valves can be assembled to the manifold plate type **RD 3__ 303**:

| | | | |
|--------------|----------|-------------|----------------|
| 3/2-way n.c. | pif 4 mm | MD 310 343 | page 2.5.1.2.4 |
| 3/2-way n.o. | pif 4 mm | MOD 310 343 | page 2.5.1.2.4 |

Blanking plates are also available type BP 3 303.

The following valves can be assembled to the manifold plate type **RD 3__ 403**:

| | | | |
|--------------|----------|-------------|----------------|
| 3/2-way n.c. | G 1/8" | MD 310 403 | page 2.5.1.2.4 |
| 3/2-way n.o. | G 1/8" | MOD 310 403 | page 2.5.1.2.4 |
| 3/2-way n.c. | pif 6 mm | MD 310 463 | page 2.5.1.2.4 |
| 3/2-way n.o. | pif 6 mm | MOD 310 463 | page 2.5.1.2.4 |

Blanking plates are also available type BP 3 403.

Please notice:

Due to the compact design of the plate if a larger number of valves are to switch at the same time please do not select plates with more than 6 stations.

| Stations | Type | Weight | Available | Type | Weight | Available |
|----------|------------|---------|------------|------------|---------|------------|
| 2 | RD 302 303 | 0,07 kg | from stock | RD 302 403 | 0,09 kg | from stock |
| 3 | RD 303 303 | 0,10 kg | from stock | RD 303 403 | 0,13 kg | from stock |
| 4 | RD 304 303 | 0,13 kg | from stock | RD 304 403 | 0,16 kg | from stock |
| 5 | RD 305 303 | 0,15 kg | from stock | RD 305 403 | 0,19 kg | from stock |
| 6 | RD 306 303 | 0,18 kg | from stock | RD 306 403 | 0,23 kg | from stock |
| 7 | RD 307 303 | 0,21 kg | on request | RD 307 403 | 0,27 kg | on request |
| 8 | RD 308 303 | 0,23 kg | from stock | RD 308 403 | 0,30 kg | from stock |
| 9 | RD 309 303 | 0,26 kg | on request | RD 309 403 | 0,33 kg | on request |
| 10 | RD 310 303 | 0,28 kg | from stock | RD 310 403 | 0,36 kg | from stock |
| 12 | RD 312 303 | 0,33 kg | from stock | RD 312 403 | 0,43 kg | from stock |
| 14 | RD 314 303 | 0,38 kg | on request | RD 314 403 | 0,49 kg | on request |
| 16 | RD 316 303 | 0,43 kg | on request | RD 316 403 | 0,55 kg | on request |

RD 3__ 344/RD 3__ 464



Common connection to port 1 (pressure) and 3 (exhaust). The individual ports 2 are also in the manifold plate equipped with push-in fittings.

The following valves can be assembled to the manifold plate type **RD 3__ 344** (pif 4 mm):

- 3/2-way n.c. MD 310 304 page 2.5.1.2.5
- 3/2-way n.o. MOD 310 304 page 2.5.1.2.5

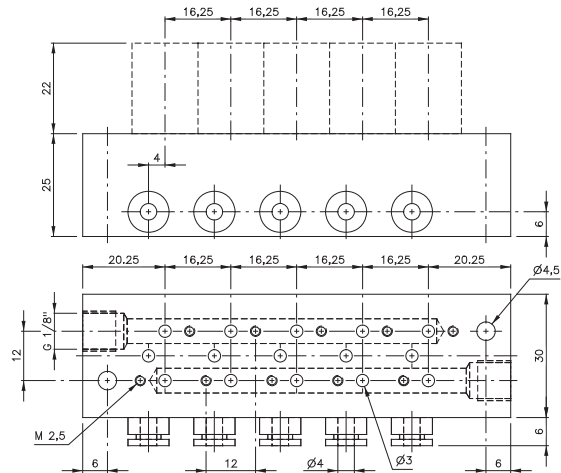
Blanking plates are also available type BP 3 344.

The following valves can be assembled to the manifold plate type **RD 3__ 464** (pif 6 mm):

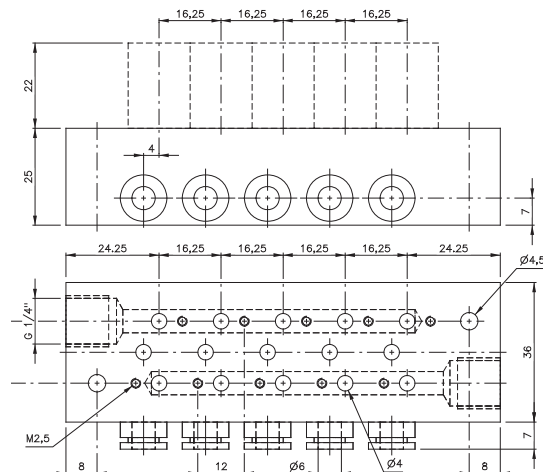
- 3/2-way n.c. MD 310 404 page 2.5.1.2.5
- 3/2-way n.o. MOD 310 404 page 2.5.1.2.5

Blanking plates are also available type BP 3 464.

Please notice:
Due to the compact design of the plate if a larger number of valves are to switch at the same time please do not select plates with more than 6 stations.

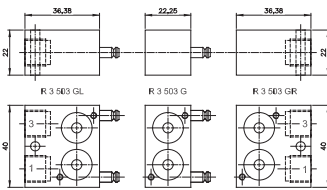


RD 3__ 344 Orifice size: 5 mm

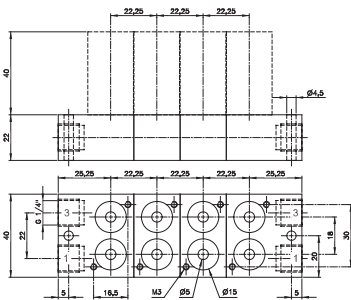


RD 3__ 464 Orifice size: 6 mm

| Stations | Type | Weight | Available | Type | Weight | Available |
|----------|------------|---------|------------|------------|---------|------------|
| 2 | RD 302 344 | 0,13 kg | from stock | RD 302 464 | 0,15 kg | from stock |
| 3 | RD 303 344 | 0,16 kg | from stock | RD 303 464 | 0,19 kg | from stock |
| 4 | RD 304 344 | 0,19 kg | from stock | RD 304 464 | 0,23 kg | from stock |
| 5 | RD 305 344 | 0,22 kg | from stock | RD 305 464 | 0,26 kg | from stock |
| 6 | RD 306 344 | 0,25 kg | from stock | RD 306 464 | 0,30 kg | from stock |
| 7 | RD 307 344 | 0,28 kg | on request | RD 307 464 | 0,34 kg | on request |
| 8 | RD 308 344 | 0,31 kg | from stock | RD 308 464 | 0,38 kg | from stock |
| 9 | RD 309 344 | 0,34 kg | on request | RD 309 464 | 0,41 kg | on request |
| 10 | RD 310 344 | 0,38 kg | from stock | RD 310 464 | 0,49 kg | from stock |
| 12 | RD 312 344 | 0,44 kg | from stock | RD 312 464 | 0,53 kg | from stock |
| 14 | RD 314 344 | 0,50 kg | on request | RD 314 464 | 0,60 kg | from stock |
| 16 | RD 316 344 | 0,56 kg | on request | RD 316 464 | 0,68 kg | on request |

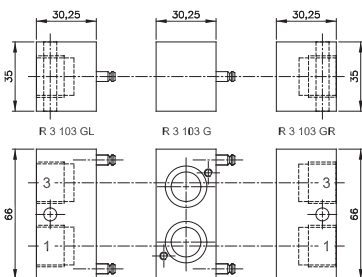


Parts of modular manifold RB 3__ 503 G



RB 3__ 503 G Orifice size: 10 mm

Modular manifold system for common connections to ports 1 (pressure) and 3 (exhaust). The system can be build and taken apart just by operating two hexagon socket screws. Additional stations can be added at any position and any time. End-plates are equipped with threads for adding DIN-rail mounting clips.



Parts of modular manifold RB 3__ 103 G

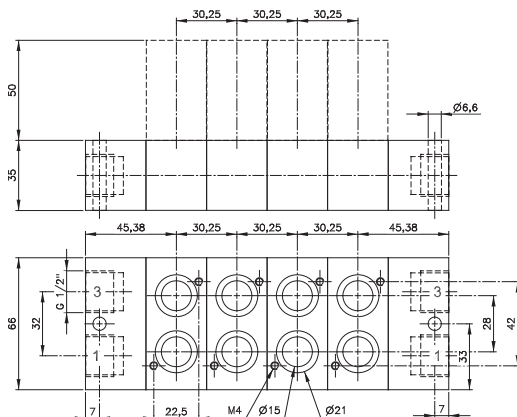
The following valves can be assembled to the system **RB 3__ 503 G**:

| | | | |
|----------------------|--------|---------------|-----------------|
| 3/2 single sol. n.c. | G 1/8" | MH 310 501 G | page 2.5.1.1.14 |
| 3/2 single sol. n.o. | G 1/8" | MOH 310 501 G | page 2.5.1.1.14 |
| 3/2 double sol. | G 1/8" | MH 320 501 G | page 2.5.1.1.18 |

The system consists of:

- End-plate right type R 3 503 GR
- End-plate left type R 3 503 GL
- Individual position type R 3 503 G

Blanking plates are also available type BP 3 503.



RB 3__ 103 G Orifice size: 19 mm

The following valves can be assembled to the system **RB 3__ 103 G**:

| | | | |
|----------------------|--------|---------------|-----------------|
| 3/2 single sol. n.c. | G 3/8" | MH 310 101 G | page 2.5.1.1.15 |
| 3/2 single sol. n.o. | G 3/8" | MOH 310 101 G | page 2.5.1.1.15 |
| 3/2 double sol. | G 3/8" | MH 320 101 G | page 2.5.1.1.18 |

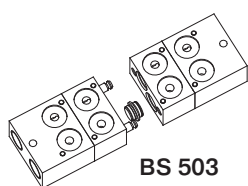
The system consists of:

- End-plate right type R 3 103 GR
- End-plate left type R 3 103 GL
- Individual position type R 3 103 G

Blanking plates are also available type BP 3 103.

Please notice:
End-plates of series 103 G are not offering an individual valve-position.

The plates can also be ordered assembled by the manufacturer. In this case order RB 3__ 503 G (1/8") or RB 3__ 103 G (3/8"). Please add two digits for the number of positions required.



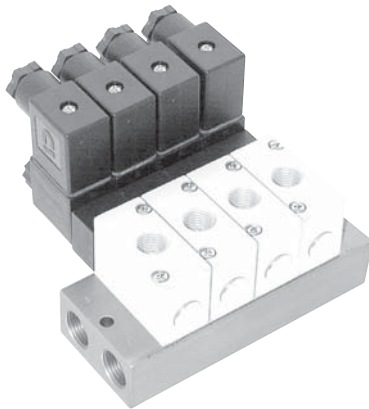
BS 503

By adding a special plug (type BS 503), two different pressures can be attached at the same manifold plate. The plug is intercepting the air-supply in the manifold plate wherever the customer likes to.

| Type | Function | Weight |
|------------|---------------------|---------|
| R 3 503 GR | End-plate right | 0,07 kg |
| R 3 503 GL | End-plate left | 0,07 kg |
| R 3 503 G | Individual position | 0,05 kg |

| Type | Function | Weight |
|------------|---------------------|---------|
| R 3 103 GR | End-plate right | 0,14 kg |
| R 3 103 GL | End-plate left | 0,15 kg |
| R 3 103 G | Individual position | 0,12 kg |

R 3__ 703 G/R 3__ 121 G



Common connection to port 1 (pressure) and 3 (exhaust).

The following valves can be assembled to the manifold plate type **R 3__ 703 G**:

Solenoid valves:

| | | | |
|-----------------------|--------|---------------|-----------------|
| 3/2 single sol. n.c. | G 1/4" | MH 310 701 G | page 2.5.1.1.14 |
| 3/2 single sol. n.o. | G 1/4" | MOH 310 701 G | page 2.5.1.1.14 |
| 3/2 double sol. | G 1/4" | MH 320 701 G | page 2.5.1.1.18 |
| 3/3-way centre closed | G 1/4" | MH 331 701 G | page 2.5.1.3 |

Pneumatically actuated 3/2-way valves:

| | | | |
|--------------|--------|-------------|--------------|
| air spring | G 1/4" | P 310 701 G | page 2.4.1.4 |
| mech. spring | G 1/4" | P 311 701 G | page 2.4.1.4 |
| double pilot | G 1/4" | P 320 701 G | page 2.4.1.6 |
| double pilot | G 1/4" | P 322 701 G | page 2.4.1.6 |

Blanking plates are also available type BP 3 703.

NPT-ported plates available on request.

Modular system on request.

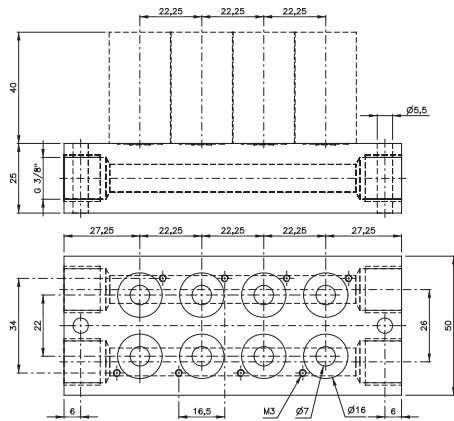
The following valves can be assembled to the manifold plate type **R 3__ 121 G**:

Solenoid valves:

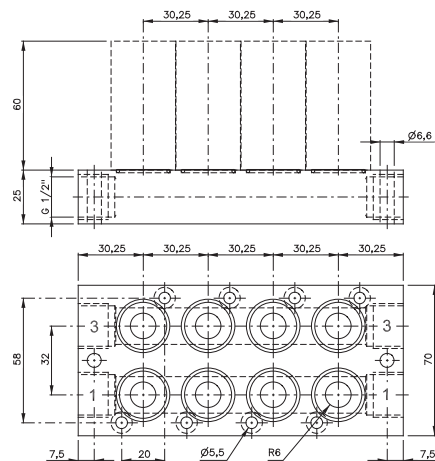
| | | | |
|-----------------------|--------|---------------|-----------------|
| 3/2 single sol. n.c. | G 1/2" | MH 310 121 G | page 2.5.1.1.15 |
| 3/2 single sol. n.o. | G 1/2" | MOH 310 121 G | page 2.5.1.1.15 |
| 3/2 double sol. | G 1/2" | MH 320 121 G | page 2.5.1.1.18 |
| 3/3-way centre closed | G 1/2" | MH 331 121 G | page 2.5.1.3 |

Pneumatically actuated 3/2-way valves:

| | | | |
|--------------|--------|-------------|--------------|
| air spring | G 1/2" | P 310 121 G | page 2.4.1.4 |
| mech. spring | G 1/2" | P 311 121 G | page 2.4.1.4 |

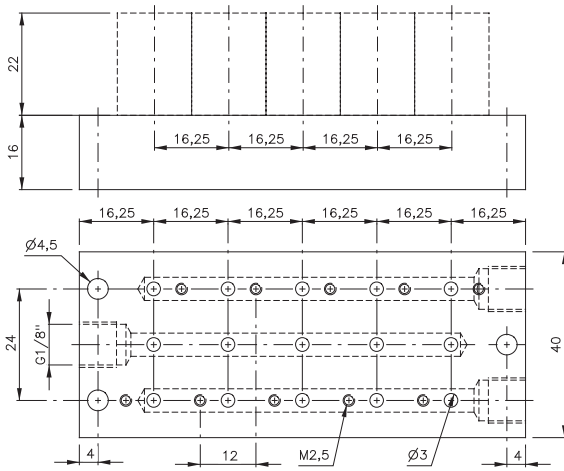


R 3__ 703 G Orifice size: 10 mm

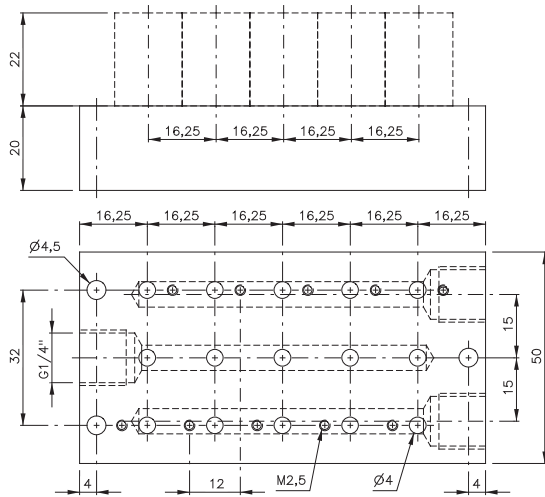


R 3__ 121 G Orifice size: 12 mm

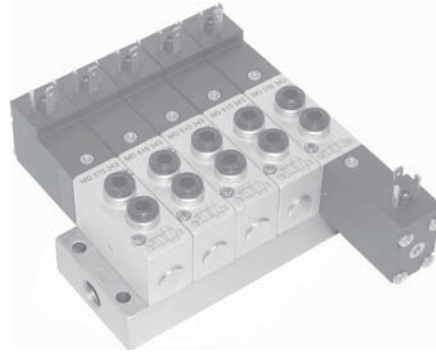
| Stations | Type | Weight | Available | Type | Weight | Available |
|----------|-------------|---------|------------|-------------|---------|------------|
| 2 | R 302 703 G | 0,15 kg | from stock | R 302 121 G | 0,28 kg | from stock |
| 3 | R 303 703 G | 0,21 kg | from stock | | | |
| 4 | R 304 703 G | 0,26 kg | from stock | R 304 121 G | 0,48 kg | from stock |
| 5 | R 305 703 G | 0,32 kg | from stock | | | |
| 6 | R 306 703 G | 0,37 kg | from stock | | | |
| 8 | R 308 703 G | 0,48 kg | from stock | | | |
| 10 | R 310 703 G | 0,59 kg | from stock | | | |
| 12 | R 312 703 G | 0,70 kg | from stock | | | |



RD 5__ 303 Orifice size: 8 mm



RD 5__ 403 Orifice size: 10 mm



Common connection to port 1 (pressure), 3 and 5 (exhaust).

The following solenoid valves can be assembled to the manifold plate type **RD 5__ 303**:

| | | | |
|-----------------|----------|------------|----------------|
| 5/2 single sol. | M5 | MD 510 303 | page 2.5.2.2.1 |
| 5/2 single sol. | pif 4 mm | MD 510 343 | page 2.5.2.2.1 |
| 5/2 double sol. | M5 | MD 520 303 | page 2.5.2.2.5 |
| 5/2 double sol. | pif 4 mm | MD 520 343 | page 2.5.2.2.5 |
| 5/3-way | M5 | MD 53_303 | page 2.5.3.2.1 |
| 5/3-way | pif 4 mm | MD 53_343 | page 2.5.3.2.1 |

Blanking plates are also available type BP 5 303.

The following solenoid valves can be assembled to the manifold plate type **RD 5__ 403**:

| | | | |
|-----------------|----------|------------|----------------|
| 5/2 single sol. | G 1/8" | MD 510 403 | page 2.5.2.2.1 |
| 5/2 single sol. | pif 6 mm | MD 510 463 | page 2.5.2.2.1 |
| 5/2 double sol. | G 1/8" | MD 520 403 | page 2.5.2.2.5 |
| 5/2 double sol. | pif 6 mm | MD 520 463 | page 2.5.2.2.5 |
| 5/3-way | G 1/8" | MD 53_403 | page 2.5.3.2.1 |
| 5/3-way | pif 6 mm | MD 53_463 | page 2.5.3.2.1 |

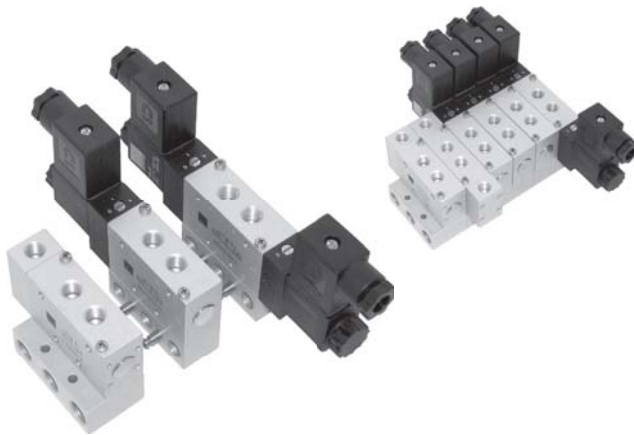
Blanking plates are also available type BP 5 403.

Please notice:

Due to the compact design of the plate if a larger number of valves are to switch at the same time please do not select plates with more than 6 stations.

| Stations | Type | Weight | Available | Type | Weight | Available |
|----------|------------|---------|------------|------------|---------|------------|
| 2 | RD 502 303 | 0,08 kg | from stock | RD 502 403 | 0,12 kg | from stock |
| 3 | RD 503 303 | 0,10 kg | from stock | RD 503 403 | 0,16 kg | from stock |
| 4 | RD 504 303 | 0,13 kg | from stock | RD 504 403 | 0,20 kg | from stock |
| 5 | RD 505 303 | 0,16 kg | from stock | RD 505 403 | 0,24 kg | from stock |
| 6 | RD 506 303 | 0,18 kg | from stock | RD 506 403 | 0,28 kg | from stock |
| 7 | RD 507 303 | 0,21 kg | on request | RD 507 403 | 0,32 kg | on request |
| 8 | RD 508 303 | 0,24 kg | from stock | RD 508 403 | 0,37 kg | from stock |
| 9 | RD 509 303 | 0,26 kg | on request | RD 509 403 | 0,41 kg | on request |
| 10 | RD 510 303 | 0,29 kg | from stock | RD 510 403 | 0,45 kg | from stock |
| 12 | RD 512 303 | 0,34 kg | from stock | RD 512 403 | 0,53 kg | from stock |
| 14 | RD 514 303 | 0,39 kg | on request | RD 514 403 | 0,62 kg | from stock |
| 16 | RD 516 303 | 0,44 kg | on request | RD 516 403 | 0,69 kg | from stock |

RB 5 __ 503 G



Modular manifold system for common connections to ports 1 (pressure), 3 and 5 (exhaust). The system can be built and taken apart just by operating two hexagon socket screws. Additional stations can be added at any position and any time. End-plates are equipped with threads for adding DIN-rail mounting clips.

The following valves can be assembled to the system **RB 5 __ 503 G**:

Solenoid valves:

| | | | |
|-----------------|--------|--------------|-----------------|
| 5/2 single sol. | G 1/8" | MH 510 501 G | page 2.5.2.1.5 |
| 5/2 single sol. | G 1/8" | MH 510 503 | page 2.5.2.2.2 |
| 5/2 double sol. | G 1/8" | MH 520 501 G | page 2.5.2.1.11 |
| 5/2 double sol. | G 1/8" | MH 520 503 | page 2.5.2.2.6 |
| 5/3 solenoid | G 1/8" | MH 53_ 501 G | page 2.5.3.1.4 |
| 5/3 solenoid | G 1/8" | MH 53_ 503 | page 2.5.3.2.2 |

Pneumatically actuated valves:

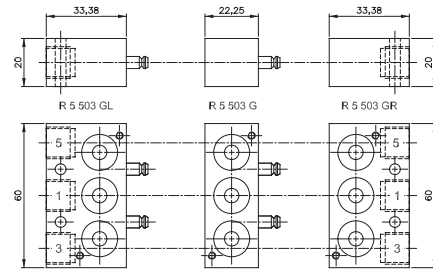
| | | | |
|------------------|--------|-------------|--------------|
| 5/2 air spring | G 1/8" | P 510 501 G | page 2.4.2.4 |
| 5/2 mech. spring | G 1/8" | P 511 501 G | page 2.4.2.4 |
| 5/2 double pilot | G 1/8" | P 52_ 501 G | page 2.4.2.8 |
| 5/3 | G 1/8" | P 53_ 501 G | page 2.4.3.3 |

The system consists of:

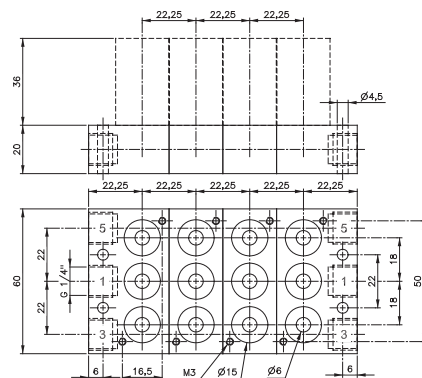
- End-plate right type R 5 503 GR
- End-plate left type R 5 503 GL
- Individual position type R 5 503 G

Blanking plates are also available type BP 5 503.

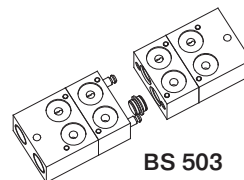
The plates can also be ordered assembled by the manufacturer. In this case order RB 5 __ 503 G. Please add two digits for the number of positions required.



Parts of modular manifold RB 5 __ 503 G



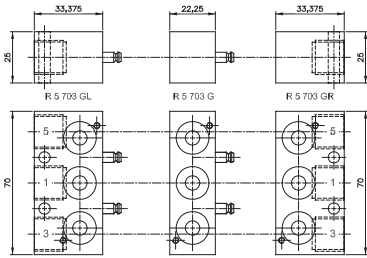
RB 5 __ 503 G Orifice size: 10 mm



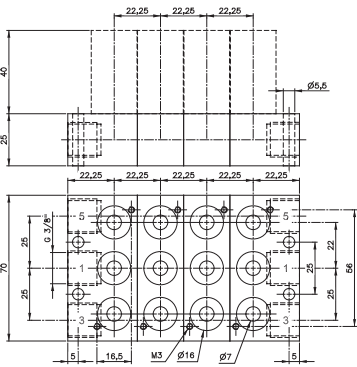
BS 503

By adding a special plug (type BS 503), two different pressures can be attached at the same manifold plate. The plug is intercepting the air-supply in the manifold plate wherever the customer likes to.

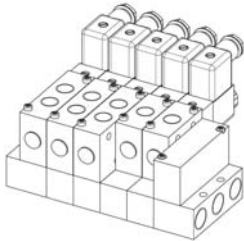
| Type | Function | Weight |
|------------|---------------------|---------|
| R 5 503 GR | End-plate right | 0,08 kg |
| R 5 503 GL | End-plate left | 0,08 kg |
| R 5 503 G | Individual position | 0,06 kg |



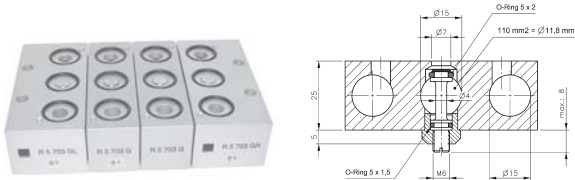
Parts of modular manifold RB 5 __ 703 G



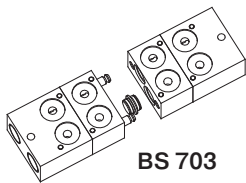
RB 5 __ 703 G Orifice size: 15 mm



1.) Combination of 3- and 5-way valves



2.) Individual valve isolation



BS 703

By adding a special plug (type BS 703), two different pressures can be attached at the same manifold plate. The plug is intercepting the air-supply in the manifold plate wherever the customer likes to.



Modular manifold system for common connections to ports 1 (pressure), 3 and 5 (exhaust). The system can be built and taken apart just by operating two hexagon socket screws. Additional stations can be added at any position and any time. End-plates are equipped with threads for adding DIN-rail mounting clips.

The following valves can be assembled to the system RB 5 __ 703 G:

| Solenoid valves: | | | |
|------------------|--------|--------------|-----------------|
| 5/2 single sol. | G 1/4" | MH 510 701 G | page 2.5.2.1.5 |
| 5/2 single sol. | G 1/4" | MH 510 703 | page 2.5.2.2.2 |
| 5/2 double sol. | G 1/4" | MH 520 701 G | page 2.5.2.1.11 |
| 5/2 double sol. | G 1/4" | MH 520 703 | page 2.5.2.2.6 |
| 5/3 solenoid | G 1/4" | MH 53_ 701 G | page 2.5.3.1.4 |
| 5/3 solenoid | G 1/4" | MH 53_ 703 | page 2.5.3.2.2 |

| Pneumatically actuated valves: | | | |
|--------------------------------|--------|-------------|--------------|
| 5/2 air spring | G 1/4" | P 510 701 G | page 2.4.2.4 |
| 5/2 mech. spring | G 1/4" | P 511 701 G | page 2.4.2.4 |
| 5/2 double pilot | G 1/4" | P 52_ 701 G | page 2.4.2.8 |
| 5/3 pneum. | G 1/4" | P 53_ 701 G | page 2.4.3.3 |

The system consists of:
 End-plate right type R 5 703 GR
 End-plate left type R 5 703 GL
 Individual position type R 5 703 G

Blanking plates are also available type BP 5 703.

NPT-ported end-plates available on request.

The plates can also be ordered assembled by the manufacturer. In this case order RB 5 __ 703 G. Please add two digits for the number of positions required.

Additional:
 1.) Combine 3-way and 5-way valves on the same plate. By adding R 53 703 G elements to the standard R 5 703 G elements, 3-way as well as 5-way valves can be mixed on the same plate (e.g. MH 510 701 G and MH 310 701 G).

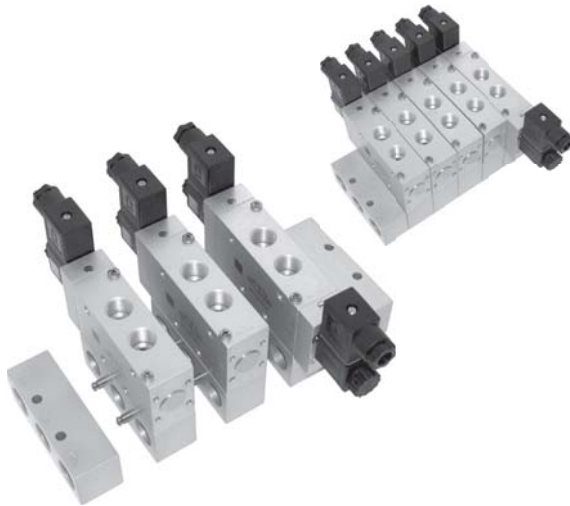
2.) Individual valve isolation.
 In certain industries the user appreciates, if he can take away air pressure at any valve on the plate individually. Valves can easily be exchanged by closing port 1 on the reverse side of the plate without interruption of the air-supply of the other valves.

The system consists of:
 End-plate right type R 5 703 GR D1
 End-plate left type R 5 703 GL D1
 Individual position type R 5 703 G D1

| Type | Function | Weight |
|------------|---------------------|----------|
| R 5 703 GR | End-plate right | 0, 13 kg |
| R 5 703 GL | End-plate left | 0, 12 kg |
| R 5 703 G | Individual position | 0,09 kg |



RB 5 __ 103 G



Modular manifold system for common connections to ports 1 (pressure), 3 and 5 (exhaust). The system can be built and taken apart just by operating two hexagon socket screws. Additional stations can be added at any position and any time. End-plates are equipped with threads for adding DIN-rail mounting clips.

The following valves can be assembled to the system

| RB 5 __ 103 G: | | | |
|---------------------|--------|--------------|-----------------|
| 5/2 single solenoid | G 3/8" | MH 510 101 G | page 2.5.2.1.6 |
| 5/2 double solenoid | G 3/8" | MH 520 101 G | page 2.5.2.1.12 |
| 5/3 solenoid | G 3/8" | MH 53_ 101 G | page 2.5.3.1.5 |

The system consists of:

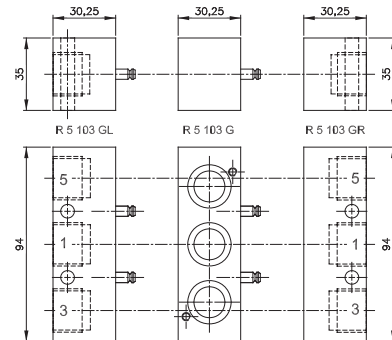
| | |
|---------------------|-----------------|
| End-plate right | type R 5 103 GR |
| End-plate left | type R 5 103 GL |
| Individual position | type R 5 103 G |

Blanking plates are also available type BP 5 103.

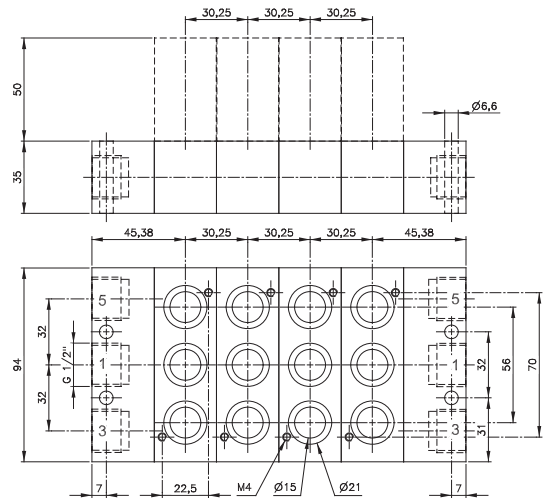
Please notice:

End-plates are not offering an individual valve-position.

The plates can also be ordered assembled by the manufacturer. In this case order RB 5 __ 103 G. Please add two digits for the number of positions required.

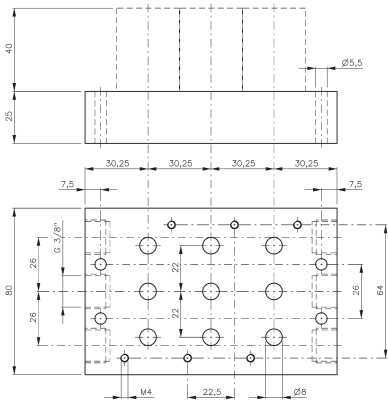


Parts of modular manifold RB 5 __ 103 G

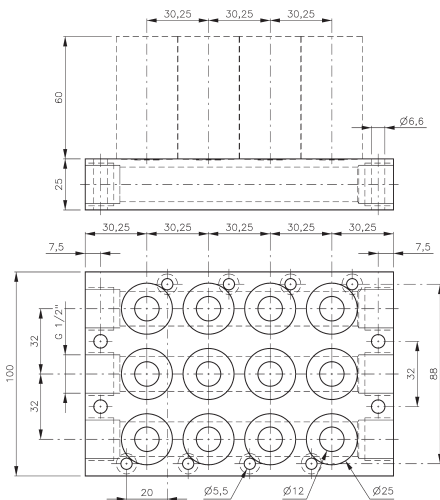


R 5 __ 103 G Orifice size: 19 mm

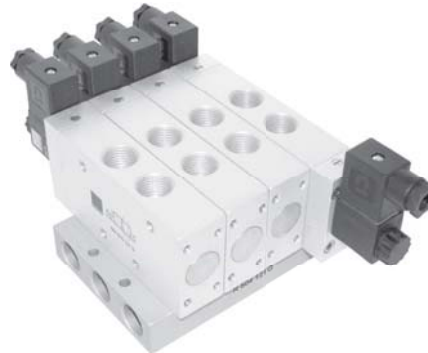
| Type | Function | Weight |
|------------|---------------------|---------|
| R 5 103 GR | End-plate right | 0,20 kg |
| R 5 103 GL | End-plate left | 0,21 kg |
| R 5 103 G | Individual position | 0,18 kg |



R 5 __ 803 Orifice size: 15 mm



R 5 __ 121 G Orifice size: 17 mm



Common connection to port 1 (pressure), 3 and 5 (exhaust).

R 5 __ 803 for valves for manifold-plates only.

The following solenoid valves can be assembled to **R __ 803**:

| | | | |
|-----------------|--------|------------|----------------|
| 5/2 single sol. | G 1/4" | MH 510 803 | page 2.5.2.2.2 |
| 5/2 double sol. | G 1/4" | MH 520 803 | page 2.5.2.2.6 |
| 5/3-way | G 1/4" | MH 53_ 803 | page 2.5.3.2.2 |

Blanking plates are also available type BP 5 803.

R 5 __ 121 G for dual use valves.

The following valves can be assembled to **R 5 __ 121 G**:

| | | | |
|-----------------|--------|--------------|-----------------|
| 5/2 single sol. | G 1/2" | MH 510 121 G | page 2.5.2.1.6 |
| 5/2 double sol. | G 1/2" | MH 520 121 G | page 2.5.2.1.12 |
| 5/3 solenoid | G 1/2" | MH 53_ 121 G | page 2.5.3.1.5 |

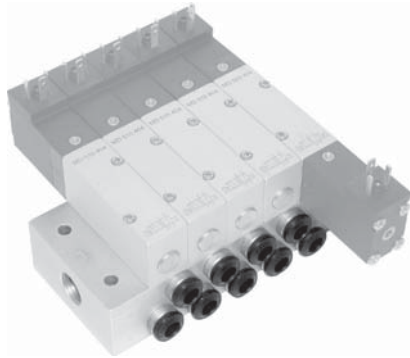
| | | | |
|------------------|--------|-------------|--------------|
| 5/2 single pilot | G 1/2" | P 510 121 G | page 2.4.2.4 |
| 5/2 double pilot | G 1/2" | P 520 121 G | page 2.4.2.8 |
| 5/3 pneumatic | G 1/2" | P 53_ 121 G | page 2.4.3.3 |

Blanking plates are also available type BP 5 121 G.

Plates can be equipped with DIN-rail mounting clips.

| Stations | Type | Weight | Type | Weight |
|----------|-----------|---------|-------------|---------|
| 2 | R 502 803 | 0,41 kg | R 502 121 G | 0,41 kg |
| 3 | R 503 803 | 0,54 kg | R 503 121 G | 0,56 kg |
| 4 | R 504 803 | 0,71 kg | R 504 121 G | 0,70 kg |
| 5 | R 505 803 | 0,86 kg | R 505 121 G | 0,85 kg |
| 6 | R 506 803 | 1,00 kg | R 506 121 G | 0,99 kg |
| 8 | R 508 803 | 1,30 kg | n.a. | |
| 10 | R 510 803 | 1,61 kg | n.a. | |
| 12 | R 512 803 | 1,90 kg | n.a. | |

RD 5__ 344/RD 5__ 464



Common connection to port 1 (pressure), 3 and 5 (exhaust).
The individual ports 2 and 4 are also in the manifold plate equipped with push-in fittings.

The following solenoid valves can be assembled to the manifold plate type **RD 5__ 344** (pif 4 mm):

| | | |
|-----------------|------------|----------------|
| 5/2 single sol. | MD 510 304 | page 2.5.2.2.3 |
| 5/2 double sol. | MD 520 304 | page 2.5.2.2.7 |
| 5/3-way | MD 53_304 | page 2.5.3.2.3 |

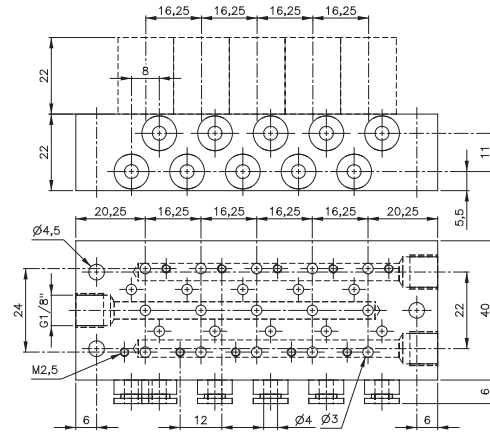
Blanking plates are also available type BP 5 344.

The following solenoid valves can be assembled to the manifold plate type **RD 5__ 464** (pif 6 mm):

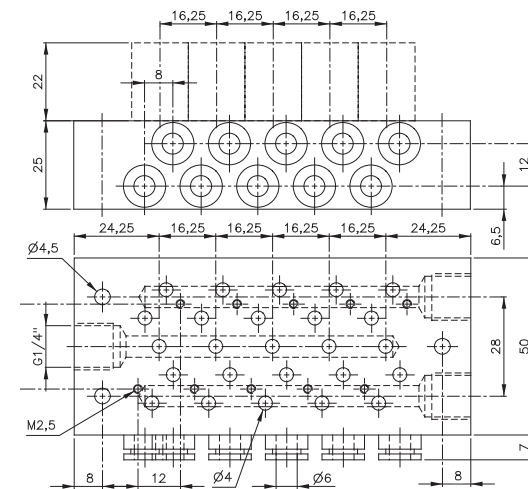
| | | |
|-----------------|------------|----------------|
| 5/2 single sol. | MD 510 404 | page 2.5.2.2.3 |
| 5/2 double sol. | MD 520 404 | page 2.5.2.2.7 |
| 5/3-way | MD 53_404 | page 2.5.3.2.3 |

Blanking plates are also available type BP 5 464.

Please notice:
Due to the compact design of the plate if a larger number of valves are to switch at the same time please do not select plates with more than 6 stations.

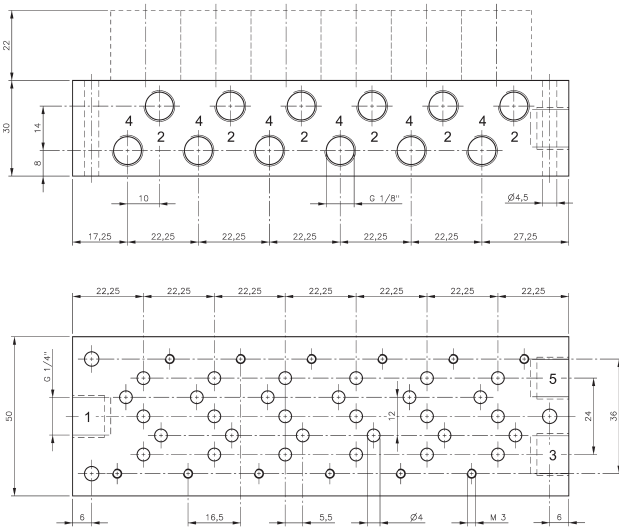


RD 5__ 344 Orifice size: 5 mm

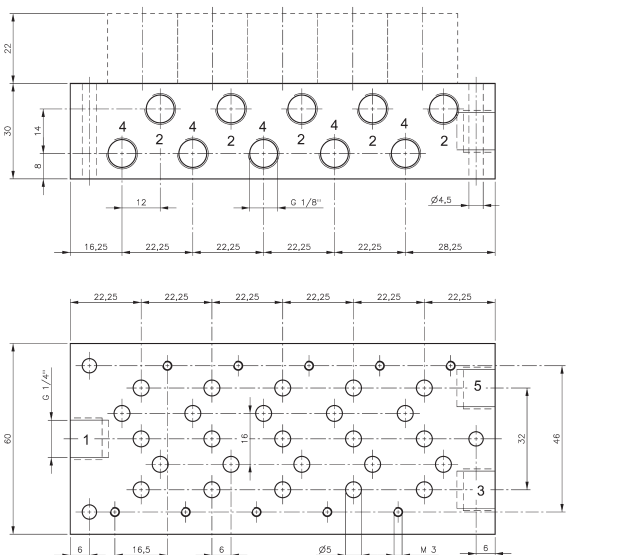


RD 5__ 464 Orifice size: 6 mm

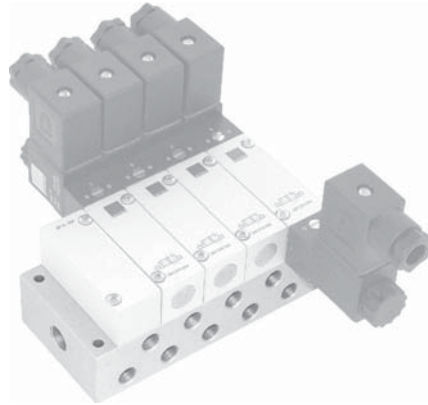
| Stations | Type | Weight | Available | Type | Weight | Available |
|----------|------------|---------|------------|------------|---------|------------|
| 2 | RD 502 344 | 0,14 kg | from stock | RD 502 464 | 0,21 kg | from stock |
| 3 | RD 503 344 | 0,18 kg | from stock | RD 503 464 | 0,27 kg | from stock |
| 4 | RD 504 344 | 0,22 kg | from stock | RD 504 464 | 0,33 kg | from stock |
| 5 | RD 505 344 | 0,26 kg | from stock | RD 505 464 | 0,38 kg | from stock |
| 6 | RD 506 344 | 0,30 kg | from stock | RD 506 464 | 0,44 kg | from stock |
| 7 | RD 507 344 | 0,34 kg | on request | RD 507 464 | 0,50 kg | from stock |
| 8 | RD 508 344 | 0,38 kg | from stock | RD 508 464 | 0,55 kg | from stock |
| 9 | RD 509 344 | 0,42 kg | on request | RD 509 464 | 0,60 kg | from stock |
| 10 | RD 510 344 | 0,46 kg | from stock | RD 510 464 | 0,66 kg | from stock |
| 12 | RD 512 344 | 0,54 kg | from stock | RD 512 464 | 0,77 kg | from stock |
| 14 | RD 514 344 | 0,62 kg | on request | RD 514 464 | 0,88 kg | on request |
| 16 | RD 516 344 | 0,70 kg | on request | RD 516 464 | 0,99 kg | on request |



R 5__ 304 Orifice size: 6 mm



R 5__ 504 Orifice size: 6,6 mm



Common connection to port 1 (pressure), 3 (exhaust) and 5 (exhaust). The ports 2 and 4 of the individual valves are also located in the manifold plate.

The following solenoid valves can be assembled to the manifold plate type **R 5__ 304** (G 1/8" orifice 3 mm):

| | | |
|-----------------|------------|----------------|
| 5/2 single sol. | MH 510 304 | page 2.5.2.2.4 |
| 5/2 double sol. | MH 520 304 | page 2.5.2.2.8 |
| 5/3-way | MH 53_ 304 | page 2.5.3.2.4 |

Blanking plates are also available type BP 5 304.

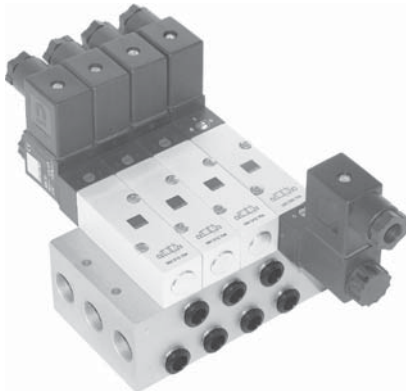
The following solenoid valves can be assembled to the manifold plate type **R 5__ 504** (G 1/8" orifice 5 mm):

| | | |
|-----------------|------------|----------------|
| 5/2 single sol. | MH 510 504 | page 2.5.2.2.4 |
| 5/2 double sol. | MH 520 504 | page 2.5.2.2.8 |
| 5/3-way | MH 53_ 504 | page 2.5.3.2.4 |

Blanking plates are also available type BP 5 504.

| Stations | Type | Weight | Type | Weight |
|----------|-----------|---------|-----------|---------|
| 2 | R 502 304 | 0,26 kg | R 502 504 | 0,30 kg |
| 3 | R 503 304 | 0,34 kg | R 503 504 | 0,40 kg |
| 4 | R 504 304 | 0,42 kg | R 504 504 | 0,50 kg |
| 5 | R 505 304 | 0,51 kg | R 505 504 | 0,60 kg |
| 6 | R 506 304 | 0,59 kg | R 506 504 | 0,70 kg |
| 8 | R 508 304 | 0,76 kg | R 508 504 | 0,89 kg |
| 10 | R 510 304 | 0,93 kg | R 510 504 | 1,08 kg |
| 12 | R 512 304 | 1,11 kg | R 512 504 | 1,29 kg |

R 5__704/R 5__784

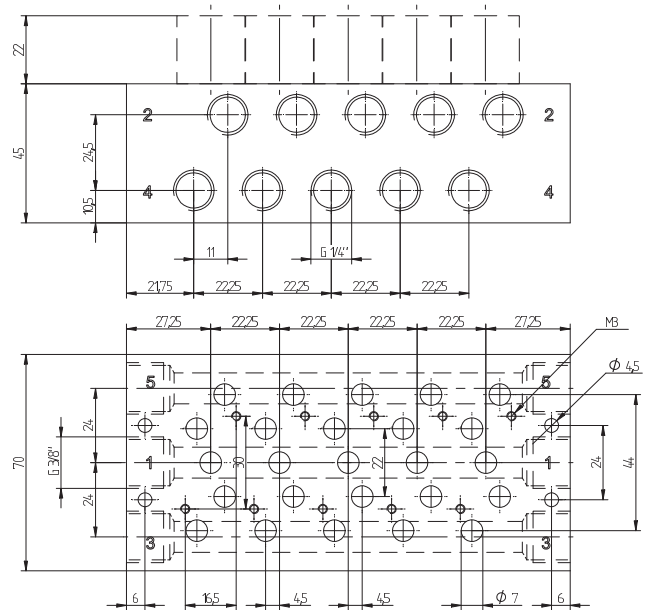


Common connection to port 1 (pressure), 3 (exhaust) and 5 (exhaust). The ports 2 and 4 of the individual valves are also located in the manifold plate.

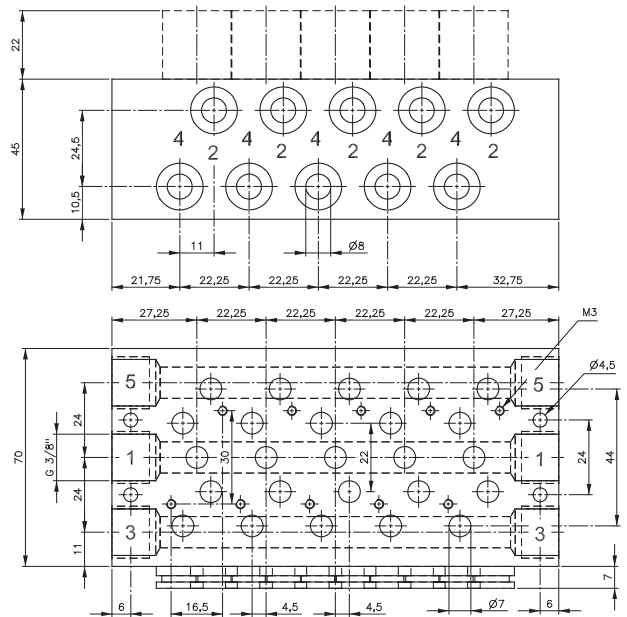
The following valves can be assembled to the manifold plate type **R 5__704** (G 1/4") and **R 5__784** (pif 8 mm):

| | | |
|---------|------------|----------------|
| 5/2-way | MH 510 704 | page 2.5.2.2.4 |
| 5/2-way | MH 520 704 | page 2.5.2.2.8 |
| 5/3-way | MH 53_704 | page 2.5.3.2.4 |

Blanking plates are also available type BP 5 704.

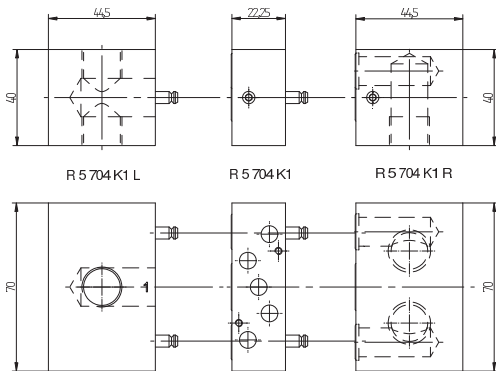


R 5__704 Orifice size: 10 mm

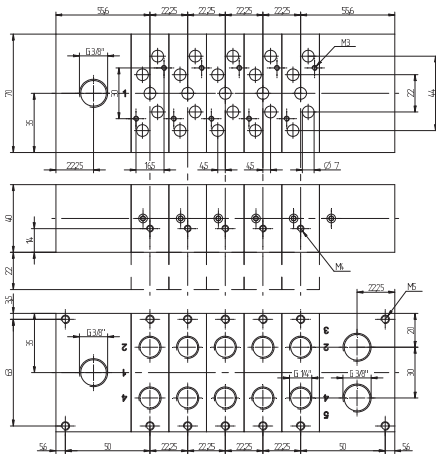


R 5__784 Orifice size: 10 mm

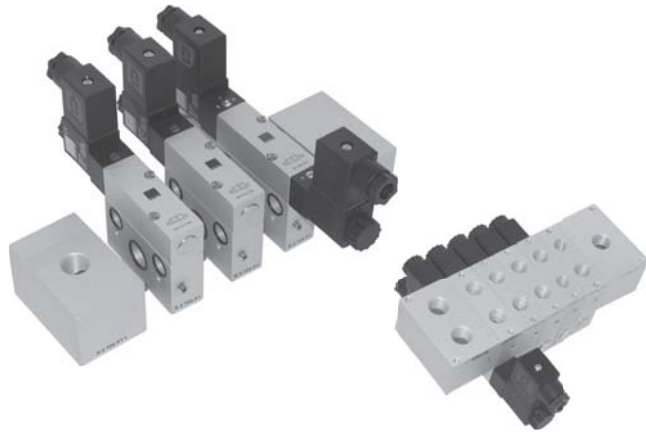
| Stations | Type | Weight | Type | Weight |
|----------|-----------|---------|-----------|---------|
| 2 | R 502 704 | 0,54 kg | R 502 784 | 0,54 kg |
| 3 | R 503 704 | 0,72 kg | R 503 784 | 0,72 kg |
| 4 | R 504 704 | 0,90 kg | R 504 784 | 0,90 kg |
| 5 | R 505 704 | 1,10 kg | R 505 784 | 1,10 kg |
| 6 | R 506 704 | 1,25 kg | R 506 784 | 1,25 kg |
| 8 | R 508 704 | 1,60 kg | R 508 784 | 1,60 kg |
| 10 | R 510 704 | 1,95 kg | R 510 784 | 1,95 kg |
| 12 | R 512 704 | 2,32 kg | R 512 784 | 2,32 kg |



Parts of modular manifold RB 5__704 K1



RB 5__704 K1 Orifice size: 10 mm



Modular manifold system with all ports on the bottom. Plates are designed for assemblage in control cabinets.

Common connection to port 1 (pressure), 3 (exhaust) and 5 (exhaust). The ports 2 and 4 of the individual valves are also located in the manifold plate. The system can be build up and taken apart by just operating two hexagon socket screws. Additional stations can be added at any position and any time.

The following valves can be assembled to the system

RB 5__704 K1:

| | | |
|---------------------|------------|----------------|
| 5/2 single solenoid | MH 510 704 | page 2.5.2.2.4 |
| 5/2 double solenoid | MH 520 704 | page 2.5.2.2.8 |
| 5/3 solenoid | MH 53_704 | page 2.5.3.2.4 |

3/2-way functions by closing either port 2 or 4.

The system consists of:

| | |
|---------------------|-------------------|
| End-plate right | type R 5 704 K1 R |
| End-plate left | type R 5 704 K1 L |
| Individual position | type R 5 704 K1 |

Blanking plates are also available type BP 5 704.

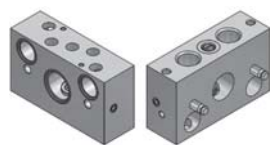
Please notice:

End-plates are not offering an individual valve-position.

The plates can also be ordered assembled by the manufacturer. In this case order **RB 5__704 K1**. Please add two digits for the number of positions required.

In case the customer wants to have the FRL inside the box, the endplate left offers as second supply port that faces inside the box. One of the two has to be closed with a G 3/8" plug.

The individual plates are also available with individual valve isolation type R 5 704 K1 D1. In certain industries the user appreciates, if he can take away air pressure at any valve on the plate individually. Valves can easily be exchanged by closing the plug in port 1 without interruption of the air-supply of the other valves.

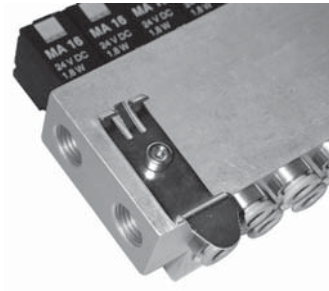


R 5 704 K1 D1

| Type | Function | Weight |
|---------------|--|---------|
| R 5 704 K1 R | End-plate right | 0,13 kg |
| R 5 704 K1 L | End-plate left | 0,12 kg |
| R 5 704 K1 | Individual position | 0,09 kg |
| R 5 704 K1 D1 | Individual position, with individual valve isolation | 0,09 kg |

DIN-rail mounting clips

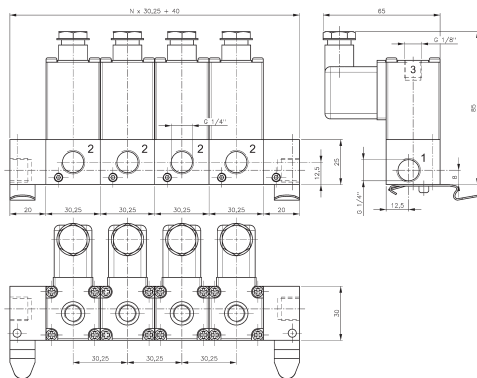
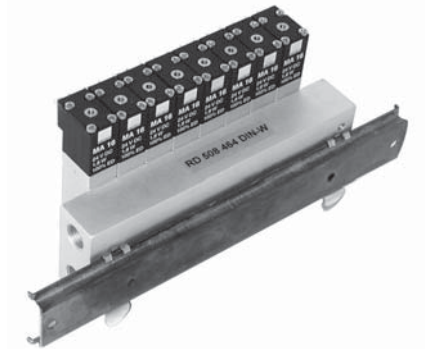
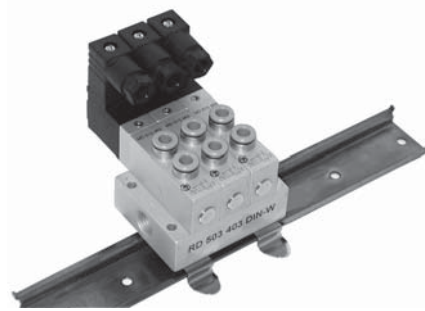
For assembling valve-terminals,
please send us your inquiry.



Mounting accessory to assemble and dismantle manifold plates to and from 35 mm wide DIN-rails. The mounting accessory is generally to be assembled on the back of the manifold plate by the manufacturer. Self-assembly is also possible, assembly drawings can be made available.

All the manifold plates offered by Hafner-Pneumatik can be equipped with the DIN-rail mounting clips.

Modular manifolds are generally equipped with threads for assembling DIN-rails.



Also individual valves such as the **MH 311 015 DIN** can be equipped with DIN-rail mounting clips.

