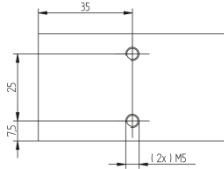
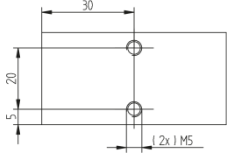
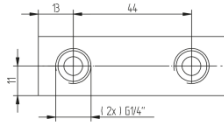
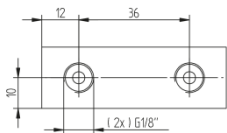
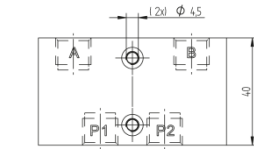
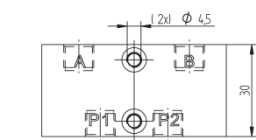
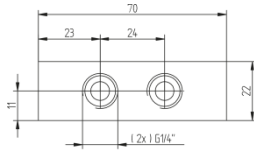
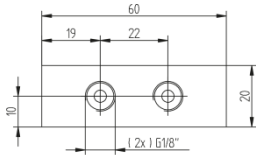
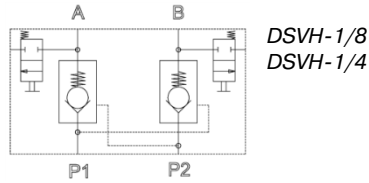
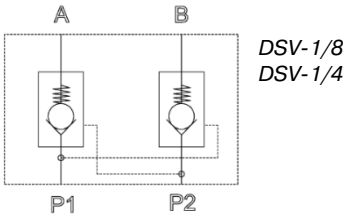
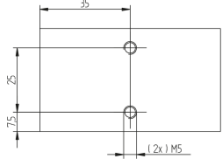
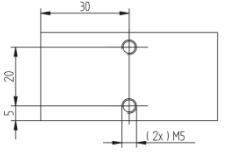
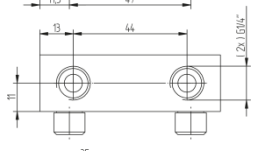
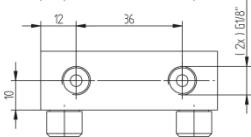
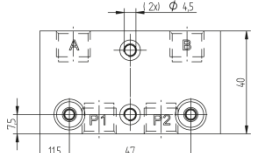
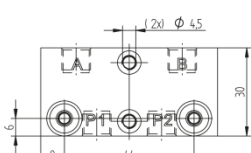
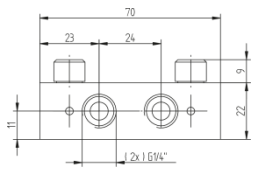
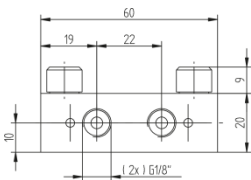


Pressure Holding Valves



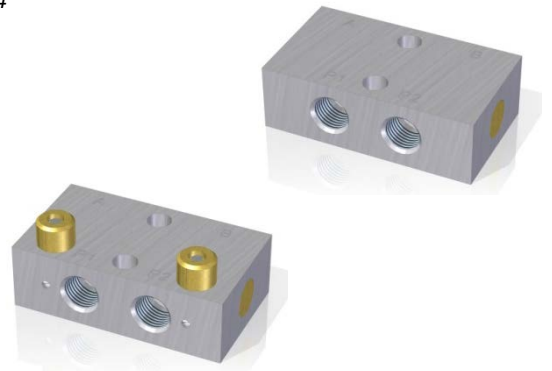
DSV-1/8

DSV-1/4



DSVH-1/8

DSVH-1/4



Pressure holding valves to hold a double acting actuator at the current position in case of pressure failure.

The valve is consisting of two non-return valves which will be unlocked by pressurising port P1 or P2.

Installation between pilot valve and actuator.

This valve is often used for gripper-applications.

In case of pressure failure, the Hafner valve is locking the air in the gripper and thereby it does not lose its load.

Type **DSVH** with manual exhaust function. The user can exhaust the actuator manually by pushing the manual exhaust buttons.

Inner parts are made of brass and POM, seals are made of NBR.

Useable in a temperature range of -10°C to $+70^{\circ}\text{C}$.

| Type | Port size | Air flow P to A/B | Air flow A/B to P | Operating press. | Weight |
|----------|-----------|-------------------|-------------------|------------------|---------|
| DSV-1/8 | G 1/8" | 230 l/min | 360 l/min | 1 - 10 bar | 0,10 kg |
| DSV-1/4 | G 1/4" | 650 l/min | 1.000 l/min | 1 - 10 bar | 0,10 kg |
| DSVH-1/8 | G 1/8" | 230 l/min | 360 l/min | 1 - 10 bar | 0,10 kg |
| DSVH-1/4 | G 1/4" | 650 l/min | 1.000 l/min | 1 - 10 bar | 0,10 kg |